



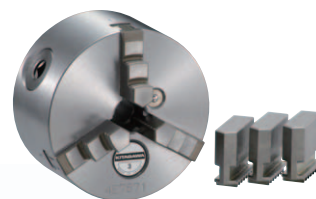
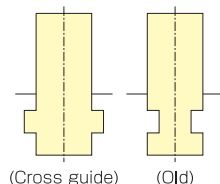
CHUCK

Scroll Chuck with Integrated Jaw (Straight Recess) SC·JN series

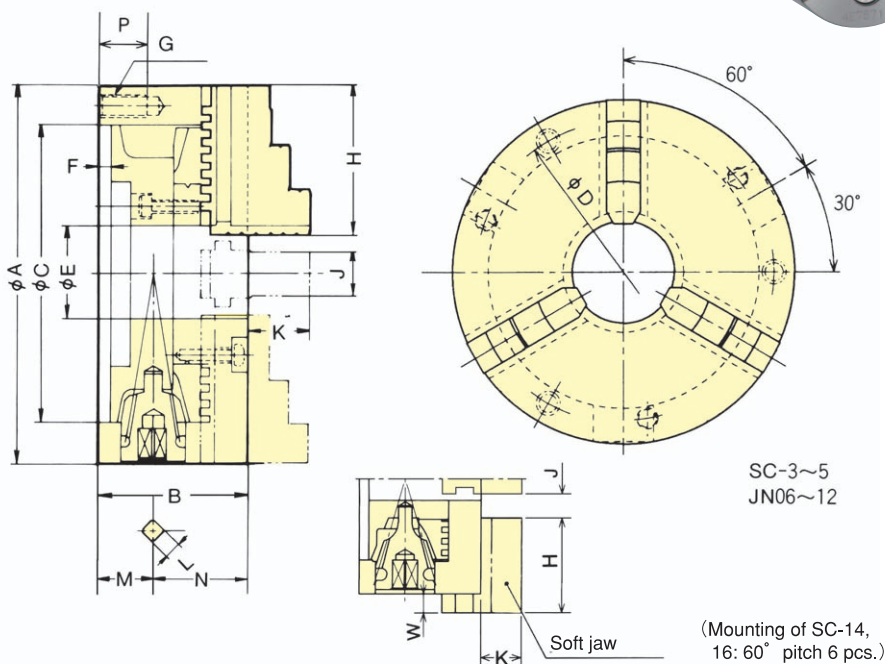
**Durable, reliable and versatile
KITAGAWA'S standard type**

- Straight Recess
- Single Piece Jaw Type
Available with hard jaw for internal and external gripping.
- Steel body
Body is manufactured from high quality steel to increase rigidity, durability and rotational speed.

(SC-3, 4, 5, 14, 16 are made of cast iron,
and JN-6, 7, 9, 10 and 12 are made of steel.)



Dimensional Drawings



Dimensions

Type	Size	A	B	C (H6)	D	E	F	G	H	J	K	L	M	N	P	W max.	W min.
SC-3(F)		85	45	60	73	16	3.5	3-M 6	35	11	15	7	17	28	13	(1.5)	(- 7)
SC-4(F)		110	58	80	95	24	4.5	3-M 8	42	14	18	8	24.5	33.5	16	(2.5)	(-12)
SC-5(F)		130	60	100	115	32	4.5	3-M 8	50	16	20	8	22.5	37.5	16	(3.5)	(-14.5)
JN06		165	65	130	147	45	5	3-M10	66	20.5	27	10	24	41	20		
JN07		190	75	155	172	55	5	3-M10	78	22.5	31	11	27.5	47.5	20		
JN09		232	84	190	210	70	6	3-M12	88	26.5	33	12	29.5	54.5	23		
JN10		273	86	230	250	85	6	3-M12	98	26.5	37	12	31.5	54.5	23		
JN12		310	96	260	285	96	7	3-M12	113	30.5	44	14	31.5	64.5	25		
SC-14		355	110	300	328	100	7	6-M12	132	35	52	15	38	72	35		
SC-16		405	120	345	375	110	8	6-M12	146	40	58	15	43.5	76.5	35		

Specifications

Type	Spec.	Thru-Hole mm	Max. static gripping force kN(kgf)	Max. speed min ⁻¹	Weight with standard jaws kg	Moment of inertia kg·m ²	Gripping range Outer dia.φmm Inner dia.φmm	Handle torque N·m(kgf·m)
SC-3(F)		16	9.0(918)	2500	1.5	0.001	2~ 70 24~ 64	29.4(3.0)
SC-4(F)		24	12.0(1224)	2500	3.1	0.004	3~ 95 29~ 84	44.1(4.5)
SC-5(F)		32	15.0(1530)	2500	4.4	0.009	3~110 33~100	63.7(6.5)
JN06		45	31.0(3161)	4000	8.4	0.030	3~160 48~150	88.3(9.0)
JN07		55	31.0(3161)	3500	12.2	0.060	4~180 56~170	107.9(11.0)
Type	Spec.	Thru-Hole mm	Max. static gripping force kN(kgf)	Max. speed min ⁻¹	Weight with standard jaws kg	Moment of inertia kg·m ²	Gripping range Outer dia.φmm Inner dia.φmm	Handle torque N·m(kgf·m)
JN09		70	37.0(3773)	2900	21.2	0.160	5~220 62~210	147.0(15.0)
JN10		85	46.0(4691)	2500	28.0	0.253	5~260 70~250	176.5(18.0)
JN12		96	55.0(5608)	2200	41.0	0.588	10~300 86~290	206.0(21.0)
SC-14		100	40.5(4130)	1500	54.0	0.950	25~315 107~290	225.6(23.0)
SC-16		110	45.0(4589)	1500	74.0	1.725	25~360 113~340	245.0(25.0)

※SC type and JN type, each one set of internal jaws and external jaws are attached as standard. Soft jaws cannot be used for JN type. SC-F type, each one set of internal jaws, external jaws and soft jaws are attached as standard. ※When the soft jaws are used for SC-F type, use the chuck of lower specification.

※Since there are types mounted to the front side, please contact your agent if required.